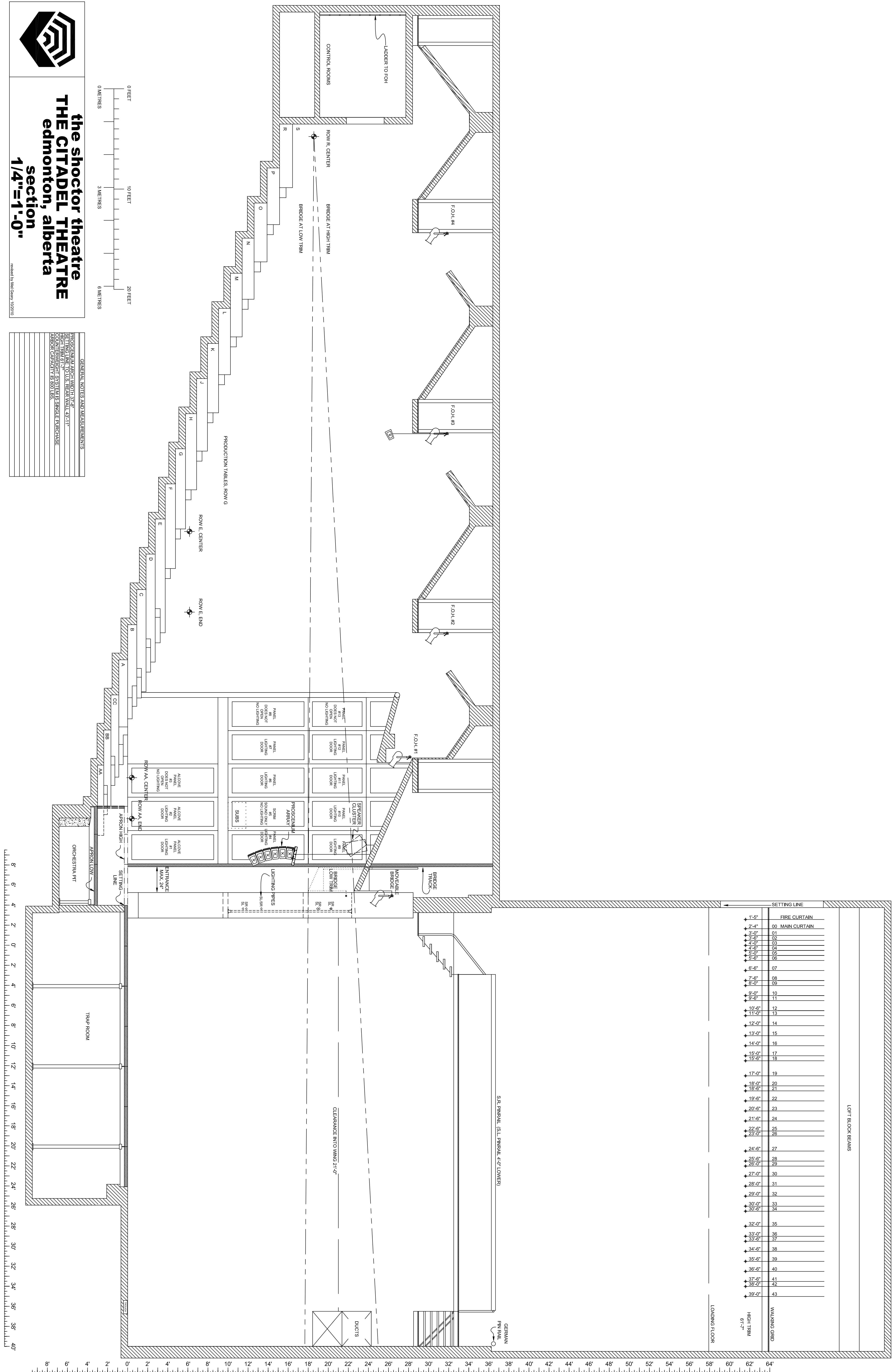


the shocor theatre
THE CITADEL THEATRE
edmonton, alberta
section
1/4"=1'-0"

GENERAL NOTES AND MEASUREMENTS
 PROSCENIUM ARRAY 17'2" x 24'
 SETTING LINE TO US REAR WALL 43'11"
 HIGH TRIM 7'7" SYSTEMS SINGLE PURCHASE
 APRON CAPACITY IS 500 LBS



SETTING LINE	LOADING FLOOR	WALKING GRID	HIGH TRIM 8'-7"
1'-5"			
2'-4"			
3'-0"			
3'-6"			
4'-0"			
4'-6"			
5'-0"			
5'-6"			
6'-0"			
6'-6"			
7'-0"			
7'-6"			
8'-0"			
8'-6"			
9'-0"			
9'-6"			
10'-0"			
10'-6"			
11'-0"			
12'-0"			
13'-0"			
14'-0"			
15'-0"			
15'-6"			
17'-0"			
18'-0"			
18'-6"			
19'-6"			
20'-6"			
21'-6"			
22'-6"			
23'-0"			
24'-6"			
25'-6"			
26'-0"			
27'-0"			
28'-0"			
29'-0"			
30'-0"			
30'-6"			
32'-0"			
33'-0"			
33'-6"			
34'-6"			
35'-6"			
36'-6"			
37'-6"			
38'-0"			
39'-0"			

